

MAPPING A COMMAND TO A DEVICE BUTTON

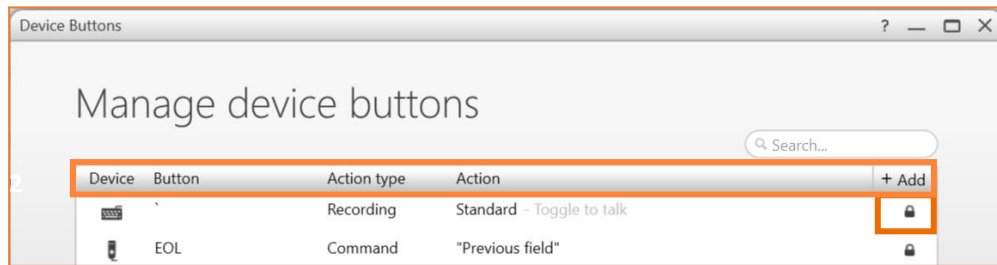
Mapping built in or custom commands, and keystrokes to buttons on your device will allow users to quickly execute commands while dictating.

Managing Device Buttons

- Open the Device Button Mappings window by selecting it from the Control Bar or by stating “Open Device Button Mappings” into your microphone.
- If set, review your current button utilizations by device, button, action type, and action.




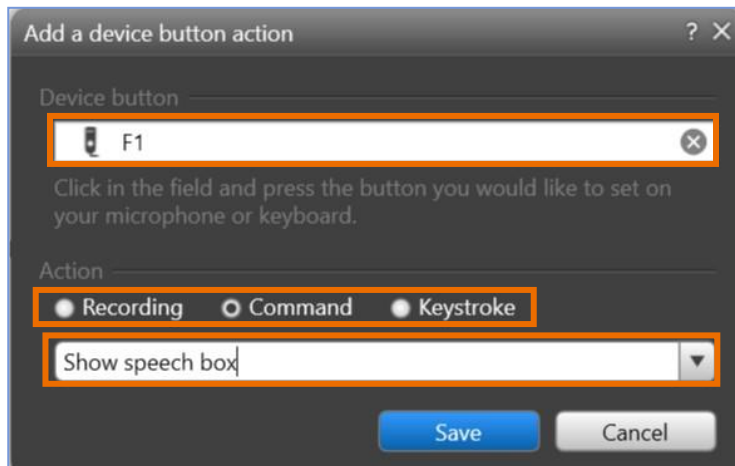
- **Note:** The lock symbol indicates that only the button action can be modified.



- You can either add a new button mapping or edit an existing button action.

Adding a New Device Button Mapping

- Select the Add Button  on the top right of the Manage Device Buttons screen.



- Place your cursor in the Device Button field and press the button on your device that you'd like to map.
- Select an action: Recording, Command or Keystroke. Command or Keystroke will be used most often.
- Choose the Recording, Command or Keystroke you'd like to map

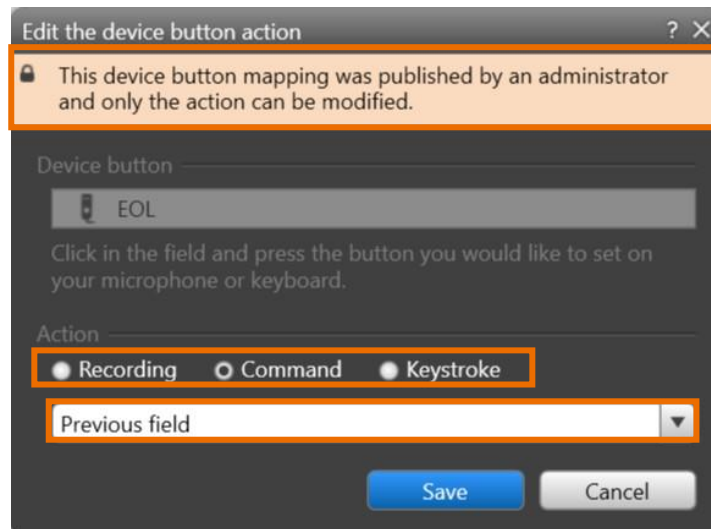
Note: Use the dropdown arrow to find the available actions to map.

- Select Save

Note: Test your button while documenting to make sure it functions as desired.

Editing an Existing Device Button Action

- Double click the Device Button you'd like to edit.



- If the Device Button was mapped by an administrator, you're only able to change the Action of the button
- Select an action: Recording, Command or Keystroke. Command or Keystroke will be used most often.
- Choose the Recording, Command or Keystroke you'd like to map

Note: Use the dropdown arrow to find the available actions to map.

- Select Save

Note: Test your button while documenting to make sure it functions as desired.